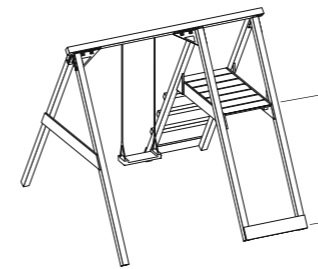
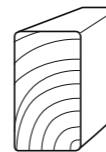


7 x | A = 240 cm (94 1/2")

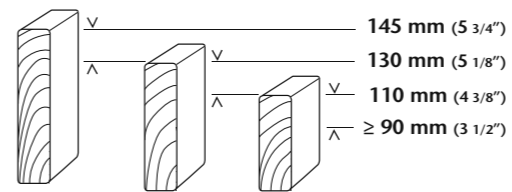


7 x | A' = 270 cm (106 1/4")



2 x | B = 115 cm (45 1/4")

3 x | C = 75 cm (29 1/2")



3 x | 3 x | 3 x | D = 140 cm (55 1/8") H

2 x | 2 x | 2 x | E = 75 cm (29 1/2")

9 x | 10 x | 12 x | F ≤ 58 cm (22 7/8")

